

Special Handling – Time to Dot Your “T”s

By **Robert G. Rufe**

USSS #15298, <rufel@aol.com>

Drum Roll! For the first time in print, and I would contend its first public appearance, the unique first day cover (FDC) with a Scott QE4 “Dot on the T” plate variety — see Figure 1.

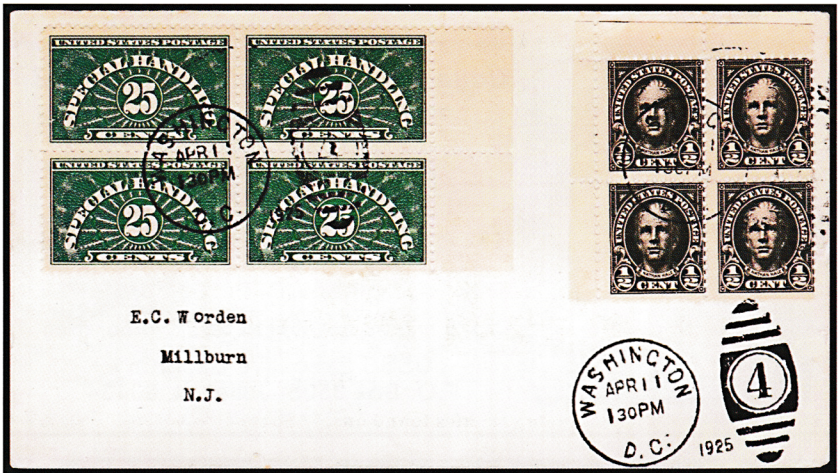


Figure 1. Discovery example for the unique Scott QE4 “Dot on the T” variety (upper right stamp) on first day cover.

As plate varieties go, or “flyspecks” as they are often called, the “A-T” in STATES, “T-A” in POSTAGE, and “Dot on the T” in STATES transfer roll relief break and associated anomalies on the 25¢ Special Handling issue of 1925 are easy to spot. An example of each of these three major varieties is shown in Figure 2, along with the stamp as designed, without plate flaws, which will be termed “Normal” in this article.

Want To Know More?

If you are interested in a particular area of U.S. philately, take a look at the second page of this issue. There is probably a committee or study group that is right for you. Contact the committee chair for more information about joining. It’s easy – just express your interest, and you’re in the committee. And best of all, it’s free!

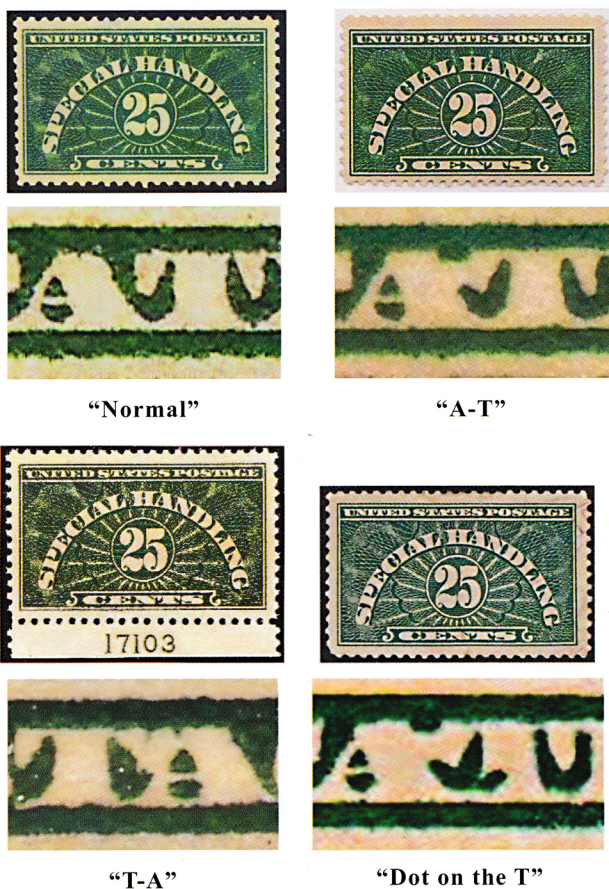


Figure 2. The four major plate varieties found on 25¢ Special Handling, Scott QE4.

The order of scarcity is exactly as in the order shown. These varieties only appear on plate no. 17103 of the eight plates used to print this stamp—the deep green color of 1925. For each sheet of 200 subjects, there are 36 normal stamps, 157 “A-T,” 6 “T-A” and 1 “Dot on the T” varieties. There are sub-varieties of the “A-T” but since these are not catalog-listed separately, they are not delineated here. It should also be noted that the “T-A” and “Dot on the T” are also “A-T.” There were seven other plates used for this stamp, so most of the production, 86%, was “normal.”

The two examples in Figure 3 with “Dot on the T” in the upper right corner position, one block mint, one block with a first day cancel, April 11, 1925, were included in my six-frame exhibit on the U.S. Special Handling service, sold in 2017, but believed to remain intact.

The three examples with “Dot on the T” in Figure 4 have previously been reported.

The only other examples of the “Dot on the T” variety known to me are the four examples shown in Figure 5. The first three are in my personal collection, and the fourth was in a late-2018 eBay auction in which I could not participate.



Figure 3. "Dot on the T" (upper right stamp) in unique mint block (above); "Dot on the T" in used block (upper right stamp) with APR 11 1925 first day cancel (below).



Figure 4. Used singles showing "Dot on the T" variety.



Figure 5. Recently discovered examples of the “Dot on the T” variety.

In summary, the total known population of “Dot on the T” variety stamps is ten: two unused (one with faults), eight used (two with precancels, two with first day cancels). Since discovering this variety and its rarity, I have continued to search everywhere to find these anomalies. The FDC discovery was serendipitous — the conjunction of knowledge and opportunity. If you know of examples in addition to these, please let me know and I’ll report in subsequent updates to the census.

For additional information on Special Handling stamps and varieties, see <https://specialhandling.weebly.com/>.

Presidential Era Committee

Interest in the stamps and the postal history of the Prexie Era (late 1930s through the mid-1950s) remains strong as seen through the activities of the Presidential Era Committee. Collecting interests include the 1938 Presidential Issues (the Prexies), the 1940 Famous American Series, the Transport Airmail Stamps of 1941-44 and other stamp issues of the same era.

With an active membership of about 90, the Committee publishes a newsletter, *The Prexie Era*, featuring original articles written by the members. (The newsletter is distributed quarterly to the membership by e-mail and snail-mail). The Committee also maintains a website at <http://prexie-era.org>.

